



Battery Load Bank 48V



Battery discharge tester mainly used in all kinds of voltage Lead-acid battery which is used in DC power industry and UPS

Have battery capacity assessment, online monitoring function, integration degree is high, volume is small, function is perfect, wide voltage range

It is suitable for a variety of battery voltage range. Support constant current discharge, constant power discharge mode.

OR-48V –Utility is used for battery systems range from 12-48V, if higher current is needed, two or more OR-48V units can be linked together.

All-in-online solution for your battery test:

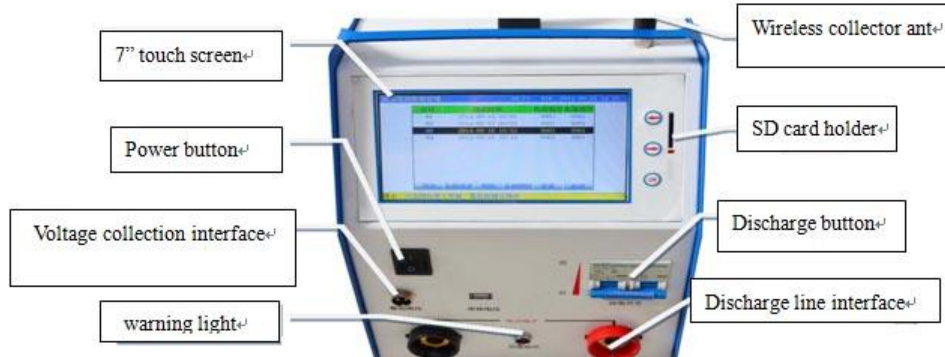
1. Real time on-line monitoring function offer you an ability to record everything you need about battery system.
2. Perform constant current and constant power discharging test to help you maximum and exactly know your battery's performance

Different discharge current range

String Voltage	48VDC
Discharge current Range	100A
	150A
	300A



General sketch



- Used to discharge to battery string removed from the system
- Discharge to Battery string voltage as 12-24V, Cell voltage as 1.2V/2V/6V/12V
- 4 adjustable stop points and multiple alarm designs to control the discharge process intelligently
- 7inch LCD touch screen for easy operation and showing various parameters real time
- Support **RS232** real time monitoring by PC or **SD Card** download data after discharge
- PC software for capacity evaluation and report generation
- Optional wireless modules for 1.2V/2V/6V/12V cells voltage real-time measuring
- On-line monitoring function:

Setting information					
RoomNo	0001	StringNo	01	StringNum	1
StringType	48V	CellType	2V	CellNum	24
NominalCap	100Ah	CellOrder	From -	TestTime	10:00(H:M)
Alarm-condition					
UMaxString			UMinString		
57.60V			43.20V		
UMaxCell			UMinCell		
2.400V			1.800V		
OK			ESC		

Prompt:The touch screen, please click.

Online monitoring for battery string: when the battery pack is under the state of online discharge, uniform charge and floating charge, perform real-time online monitoring for all cells. The monitoring includes string voltage, cell voltage, charge/discharge current, monitoring time of battery string, charge/discharge capacity of battery



● Discharge function:

Discharge setting					
		18.8v		49%	
10-18-2015 09:30					
Setting information					
RoomNo	0001	StringNo	01	StringNum	1
StringType	48V	CellType	2V	CellNum	24
NominalCap	100Ah	CellOrder	From -	Dis.Method	Const-I
Dis.H.R	10h			I-Descarga	10.0A
Condic.Fin.Prueba					
UMinString	43.20V	UMinCell		1.800V	
CellTotal	2	CellVolt.		Alarm	
C-Discharge	100Ah	T-Discharge		10:00(H:M)	
OK			ESC		

Prompt:The touch screen, please click.

Perform discharge of constant current taking advantage of intellectualized dummy load after the battery pack is removed from system,set up the parameters of “discharge current”、 “discharge time ”、 “discharge capacity” 、 “final protective voltage of whole pack”and“ final protective voltage of cell”, and the tester could carry out discharge function automatically, display discharge current, battery discharged capacity、 the whole pack voltage, cell voltage, discharge time and etc at real time;

Multiple Adjustable Stop Points

OR-FDY48V offers 4 adjustable points for shutdown points to avoid excessive discharge:

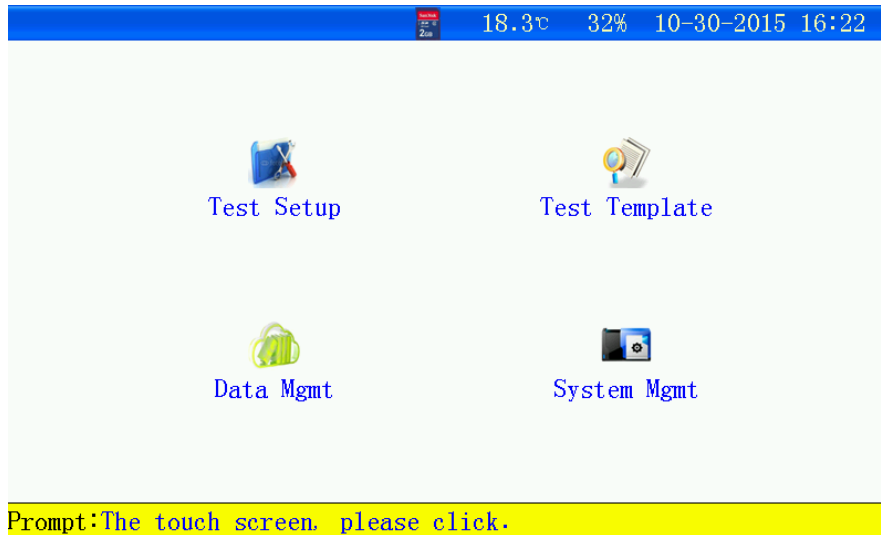
Stop Point	Setting Range
String Voltage	0 - 30.0 V
Discharge Time	0 - 99 Hour 99 Min
Discharge Capacity	0 - 1500 AH
Cell Low Voltage	0 - 15.00 V

- Battery String voltage is 48VDC and single battery voltage is 2V/6V/12V. Users can decide how to set single battery voltage

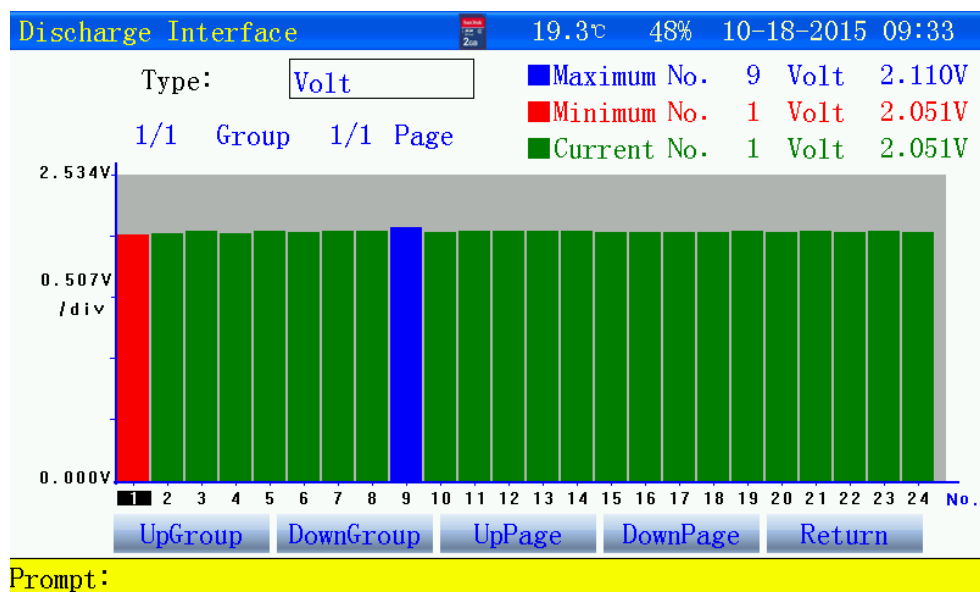


● When we do confirmation test we can set four condition of stopping discharging:

- ① Stop voltage of whole set battery
- ② Single battery voltage stop;
- ③ Stop discharging time
- ④ Discharging voltage

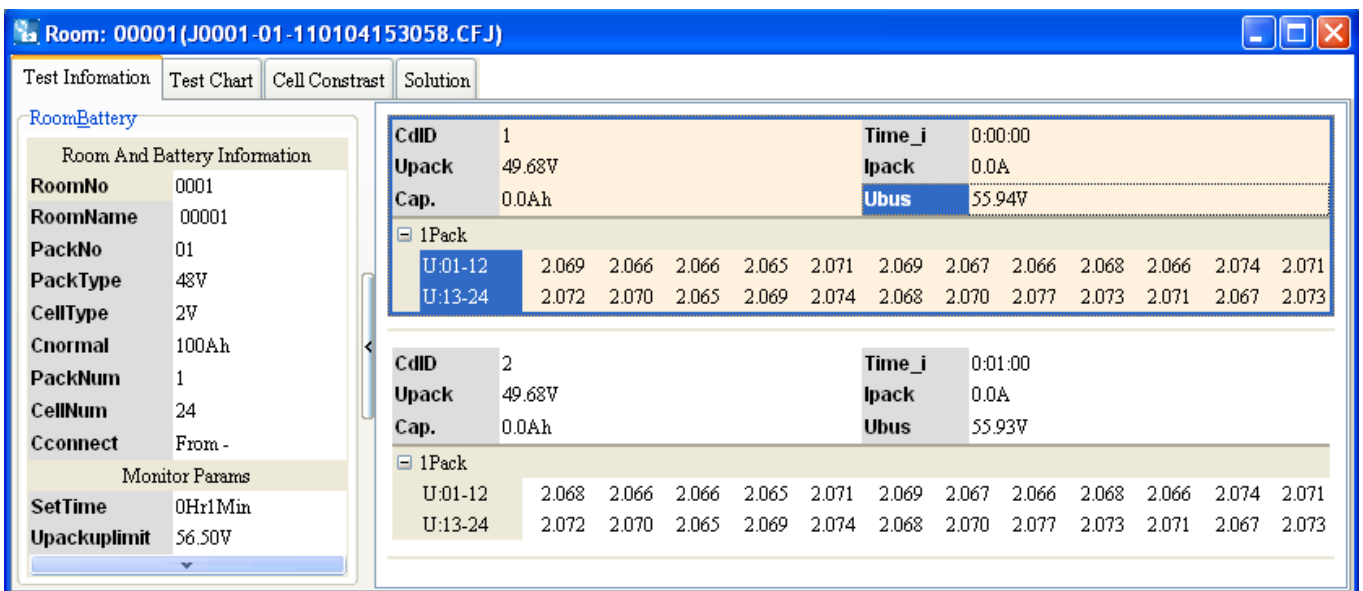


● Easy to operate: All input is simple English menu, humanized operation, clear procedure, every step and interface will give user brief tips avoid incorrect operation fundamentally





- Mature correspondence function, including RS232 communication port and SD card connection port. Data will be transferred to PC begin the storage management. It can analyze and store historical data in long time; It's convenient, reliable and safe if we transfer data via SD card
- Tester host integrated monitoring part and power part together, and power part adopted latest hi-efficiency components
- Adopted new special low-heat hi-efficiency loading material and advanced control technology ensure the higher constant current precision.
- It can be hung and used for any large volume battery to test the actual volume
- Providing data management, print, analyze, count report, automatic generate test report. Amplify or minify the voltage curve for easy observation.



The auto-test and protection function: During test if we find whole battery set or single battery have any problem test will stop automatically to avoid any further damage and completely prevent shock on the device; test can be cut off according to actual condition as well

After test all test result will be displayed automatically and according to these data advise maintenance point



Specification

Features	Specifications		
Model	48V/100A	48V/150A	48V/300A
String Voltage measurement range	0~60V		
String Voltage Resolution	0.01V		
Voltage measurement accuracy	≤±0.5%		
Cell Voltage Resolution	0.01V		
Discharge current Range	2~100A	2~150A	2-300A
Discharge Voltage of Constance current and constant power	40~56V		
Current Measurement Resolutions	0.1A		
Cell voltage measurement type	1.2V/2V: 0-4V; 6V:0-8V; 12V: 0-15V		
Power Supply	110VAC or 220VAC±15% 50Hz/60Hz		
Cooling mode	Air Cooling		
Communication Mode	RS232 and SD Card		
Display	7inch Touch screen		
High-Voltage insulation test	Input-The enclosure: 2200Vdc 1min Input-Output: 2200Vdc 1min Output- The enclosure: 700Vdc 1min		
Safety standard	EN610950		
Work Temperature	-5~50℃		
Storage Temperature	-40~70℃		
Humidity	Relative humidity 0~90% (40±2℃)		
Noise	<60dB		
Dimensions	440x225x300mm	440x225 ×x300mm	480x225x410
Weight	<10.5Kg	<10.5Kg	<13Kg



Packing list

1	OR -48V	1	Unit
2	110VAC or 220VAC Power cord	1	PC
3	Discharge cable (Red+; Black-)	2	PC
4	String voltage collection line	1	SET
5	Cell voltage monitoring module	1	PC
6	Cell voltage collection line	1	SET
7	Module power cord	1	SET
8	433Antenna	2	PC
9	Touch Pen	1	PC
10	SD Card	1	SET
11	User Manual	1	PC
12	Manufacturer certificate	1	PC
13	Alloy carrying case	1	PC
14	Packing list	1	PC

